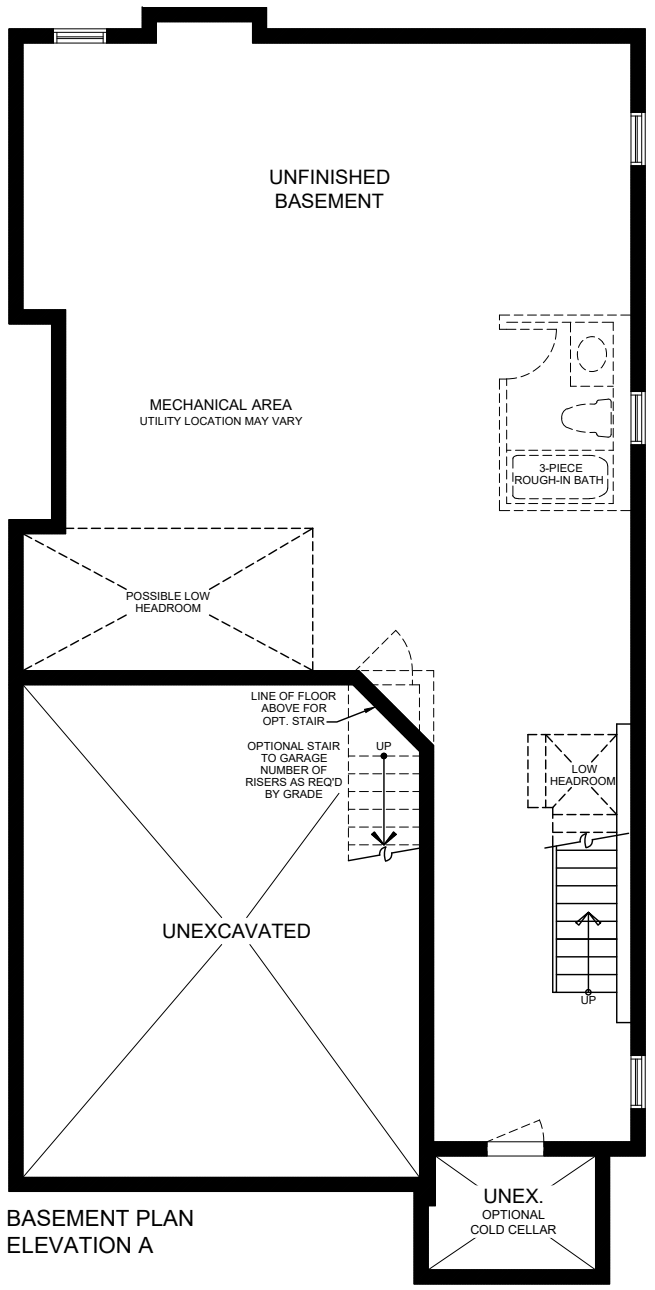
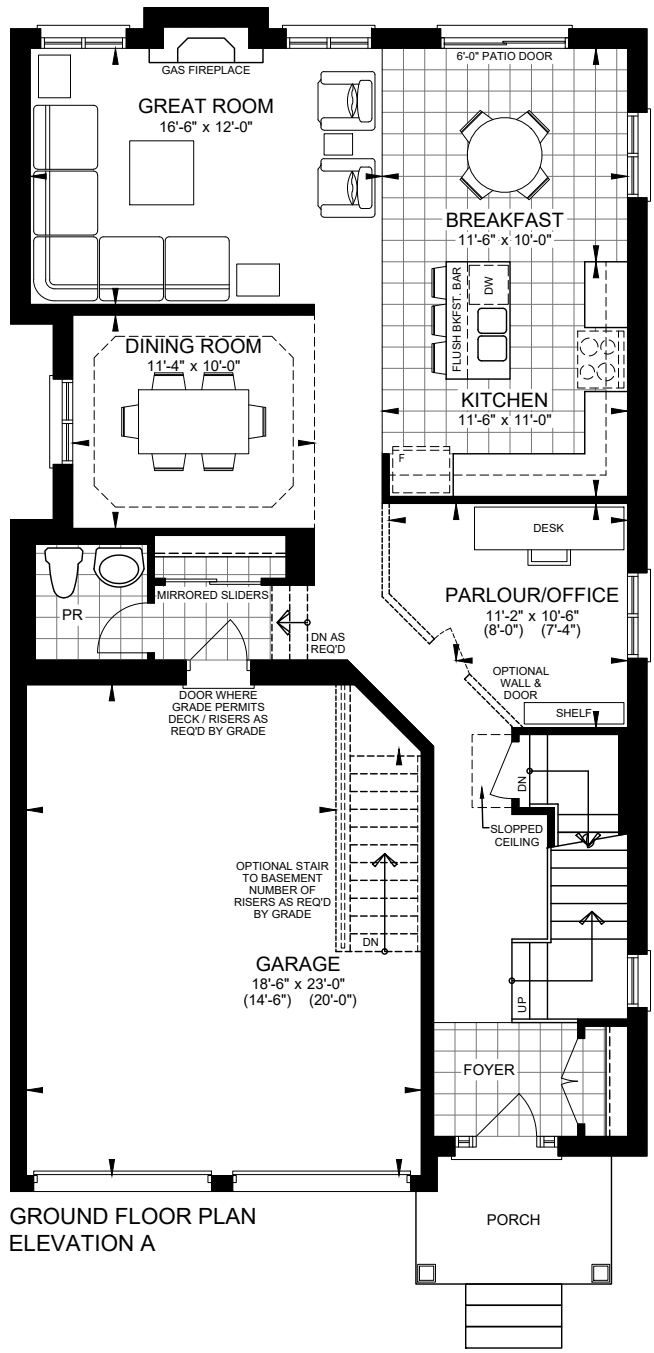


SANDPOINT BEACH (36-12)



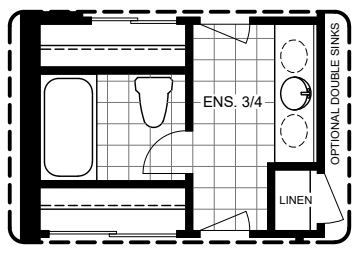
BASEMENT PLAN ELEVATION A



GROUND FLOOR PLAN ELEVATION A



SECOND FLOOR PLAN ELEVATION A



OPTIONAL PLAN ENS. 3 / 4

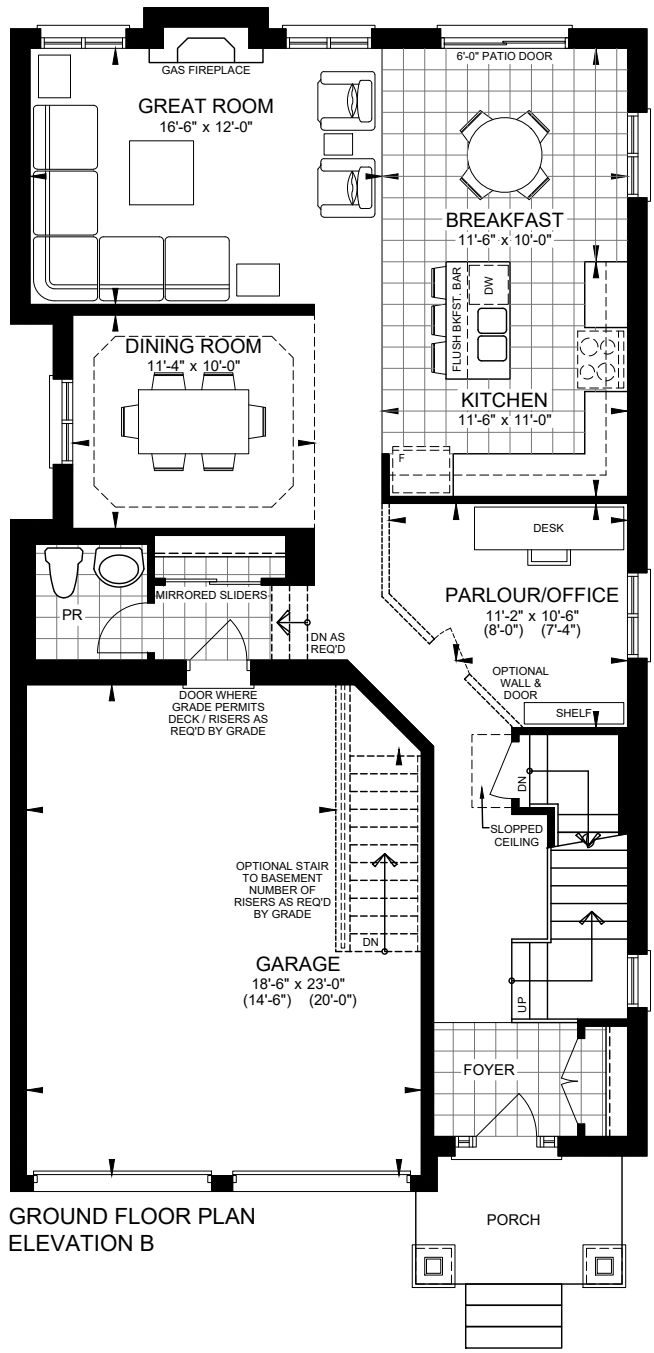
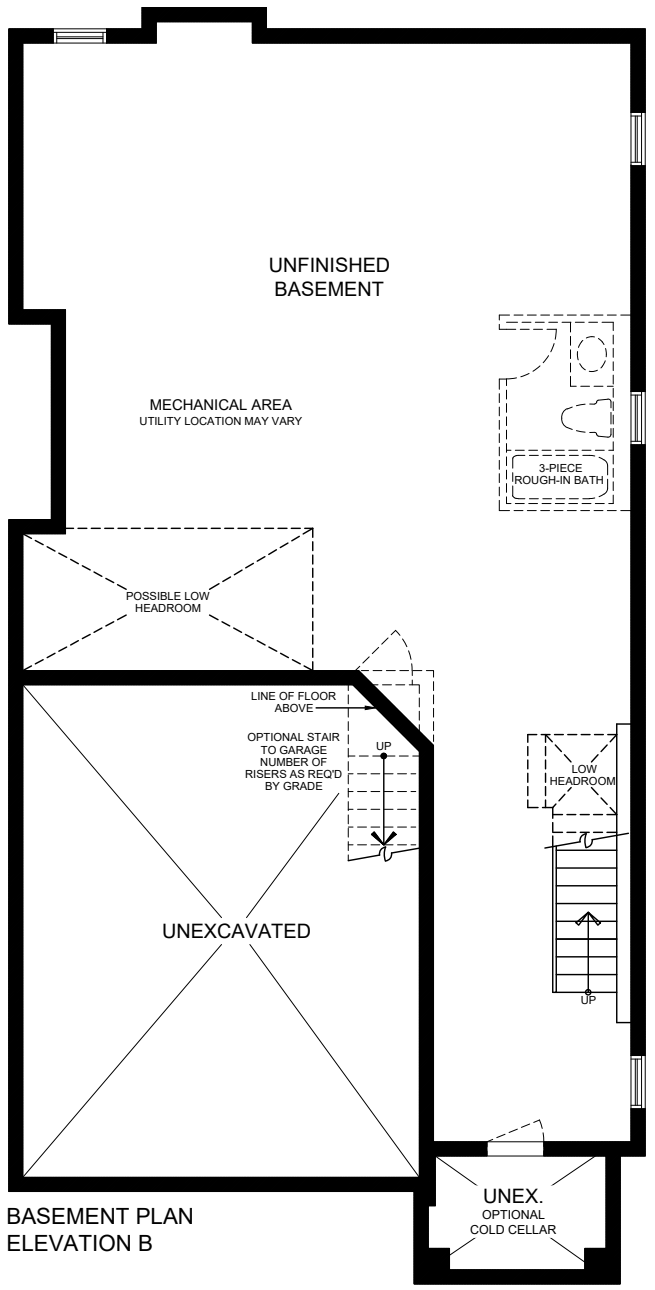


FRONT ELEVATION A

ELEVATION A = 2546 sf
 ELEVATION B = 2535 sf
 ELEVATION C = 2546 sf

All house renderings are artist's concepts, materials, specifications, elevations & floor plans are subject to change without notice. E & OE Floor plans contain approximate dimensions, actual useable floor space may vary from stated floor areas. Basement windows, dropped archways, boxes & bulkheads that may be required for plumbing & HVAC runs &/or chases, may not be shown on drawings. Exterior colours are conceptual & may not be indicative of actual colour packages.

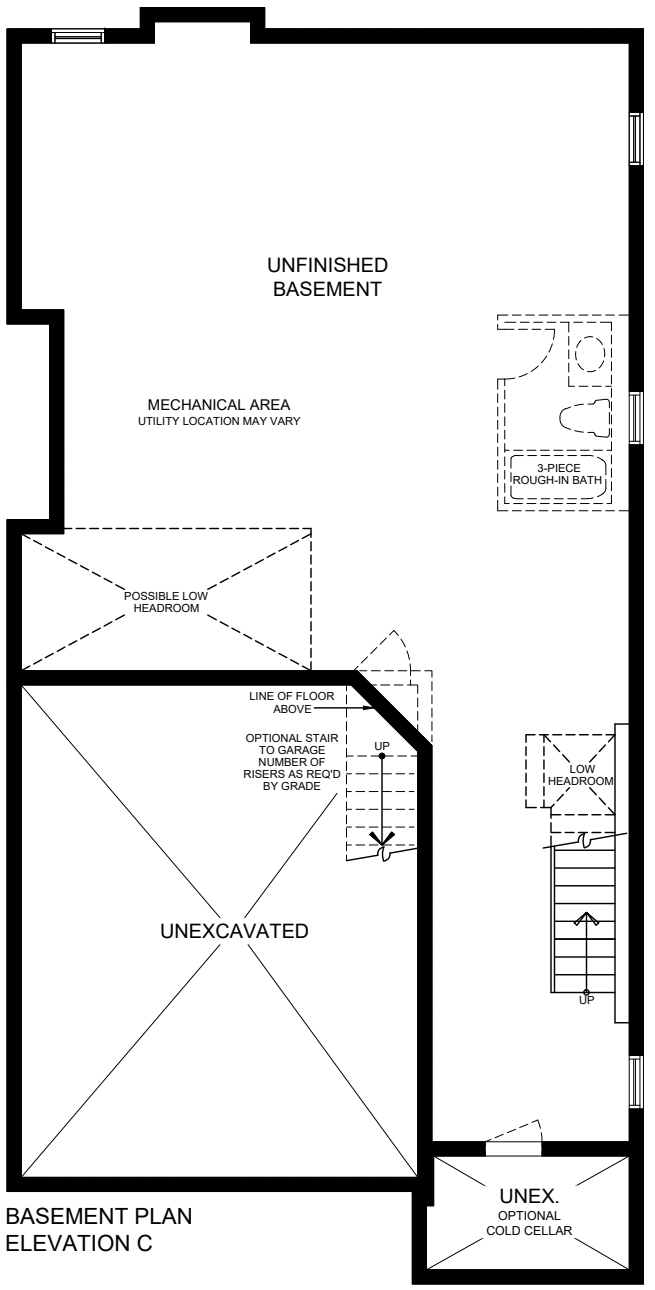
SANDPOINT BEACH (36-12)



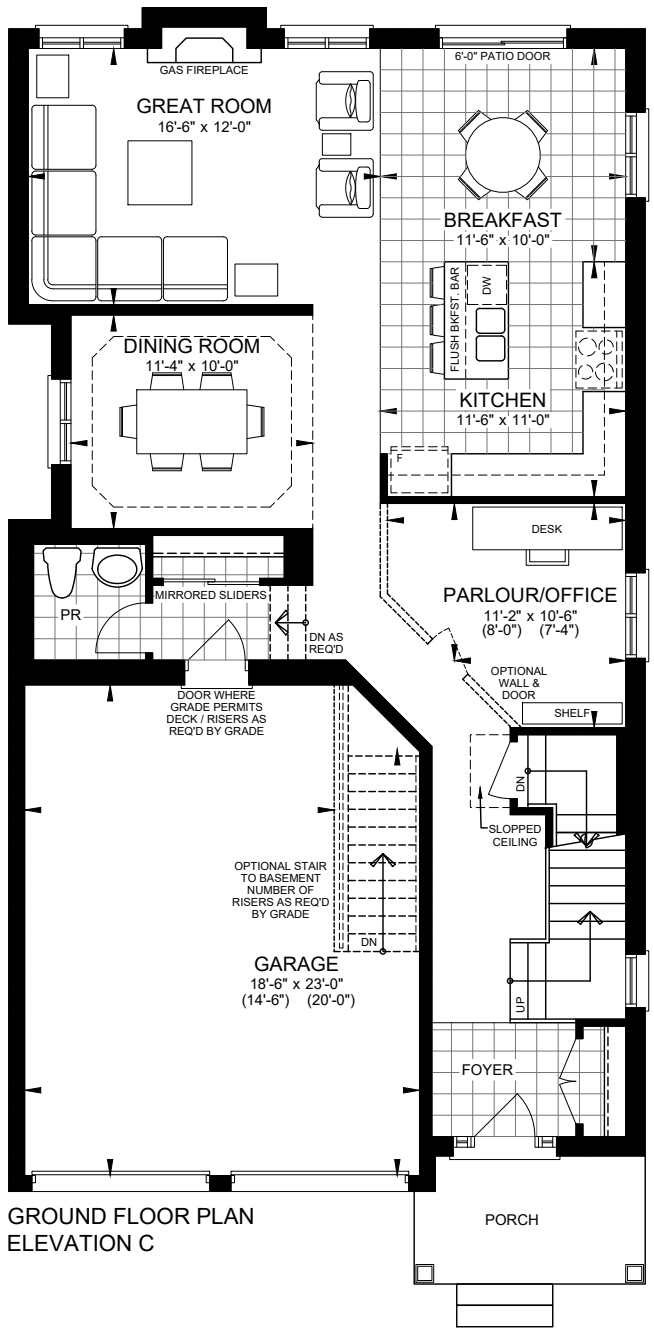
ELEVATION A = 2546 sf
 ELEVATION B = 2535 sf
 ELEVATION C = 2546 sf

All house renderings are artist's concepts, materials, specifications, elevations & floor plans are subject to change without notice. E & OE Floor plans contain approximate dimensions, actual useable floor space may vary from stated floor areas. Basement windows, dropped archways, boxes & bulkheads that may be required for plumbing & HVAC runs &/or chases, may not be shown on drawings. Exterior colours are conceptual & may not be indicative of actual colour packages.

SANDPOINT BEACH (36-12)



**BASEMENT PLAN
ELEVATION C**



**GROUND FLOOR PLAN
ELEVATION C**



**SECOND FLOOR PLAN
ELEVATION C**



FRONT ELEVATION C

ELEVATION A = 2546 sf
ELEVATION B = 2535 sf
ELEVATION C = 2546 sf

All house renderings are artist's concepts, materials, specifications, elevations & floor plans are subject to change without notice.
 E & OE Floor plans contain approximate dimensions, actual useable floor space may vary from stated floor areas. Basement windows, dropped archways, boxes & bulkheads that may be required for plumbing & HVAC runs &/or chases, may not be shown on drawings.
 Exterior colours are conceptual & may not be indicative of actual colour packages.